



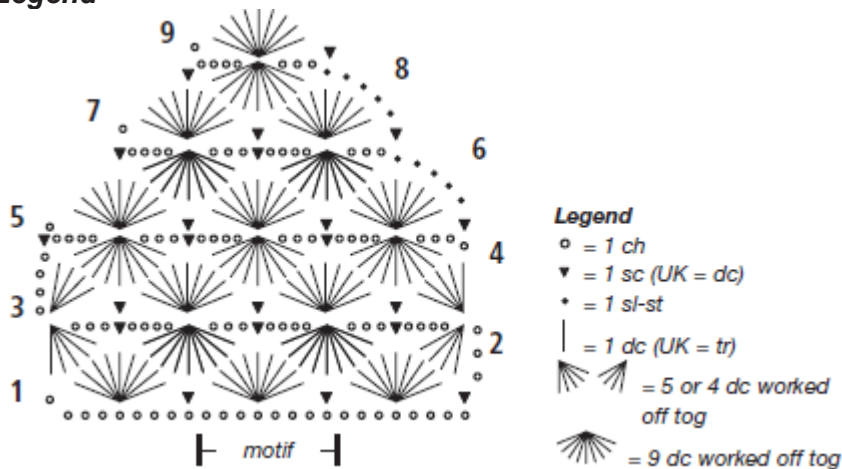
Ladies' jacket

Size: to fit bust 76-86 cm [30"-34"]. All measurements are in centimeters (cm). For approximate inch sizes simply multiply by 0.4 (or divide by 2.54).

Materials: yarn **Gedifra Videra**, 850 g #03267 mottled green.

8 mm [size L/11] and 10 mm [size NP/15] crochet hook, brand Milward **or size to obtain gauge**, plus one green button and 1 snap.

Legend



Basic pattern: ch, sc (UK = dc) and dc (UK = tr) foll stitch dia. No. of sts. mult of 8 + turning ch.

Row 1: 1 ch for turning, *miss 3 sts., 9 dc into the foll st., miss 3 sts., 1 sc, rep from *.

Row 2: 3 ch for turning, 4 dc worked off tog into the foll 4 dc, *4 ch, 1 sc into the center dc, 3 ch, 9 dc worked off tog (into 4 dc, 1 sc and 4 dc of previous row), rep from *, end with 5 dc worked off tog (into the last 4 dc and turning ch).

Row 3: 4 ch for turning, 5 dc into the dc worked off tog of previous row, *1 sc into the sc of previous row, 9 dc into the dc worked off tog of previous row, rep from *, end with 5 dc into the dc worked off tog of previous row.

Row 4: 1 ch for turning and 3 ch, 9 dc (into 4 dc, 1 sc and 4 dc of previous row), 4 ch, 1 sc into the center dc, 3 ch, rep from *, end with 1 sc into the ch.

Row 5: 1 ch for turning, *miss 3 sts., 9 dc into the dc worked off tog on previous row, miss 3 sts., 1 sc into the sc of previous row, rep from *, end with 1 sc into the 1st initial ch.

Work row 1 once, then rep rows 2-5 throughout for patt, then for sleeve cap crochet rows 6-9, see also method.

Gauge: on 8 mm hook, 8 sts. (= 1 motif) = about 9 cm wide, 4 rows = about 10 cm high.

METHOD

Back: crochet 40 ch + 1 ch for turning on 8 mm hook and work in basic patt = 5 motifs.

When work measures 40 cm, after 16 rows, or after a 4th row, dec 1/2 motif at each end for armholes = 32 sts. When work measures 60 cm, after 24 rows, or after a 4th row, end work.

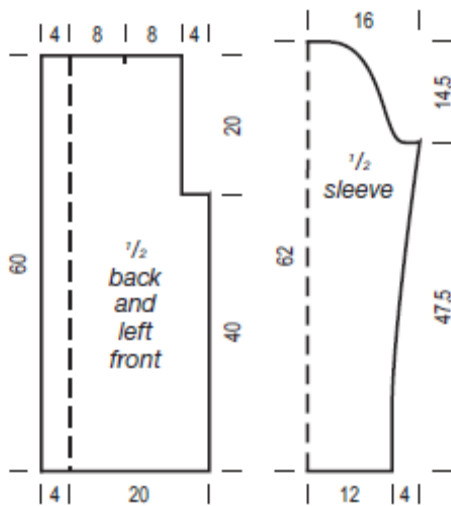
Left front: crochet 24 ch + 1 ch for turning on 8 mm hook, and cont in basic patt = 3 motifs.

When work measures 40 cm dec 1/2 motif at right edge for armhole shaping = 20 sts. When work measures 60 cm end work.

Right front: work in reverse.

Sleeves (both alike): crochet 24 ch + 1 ch for turning on 8 mm hook and work in basic patt = 3 motifs. At the same time inc for sleeve shaping at each end 1 dc after 4 rows once, then 1 dc on every 2nd row 3 times. When work measures 47.5 cm, after 19 rows, or after a 5th row, miss the 4 inc dc for sleeve cap with 4 sl-st, then work rows 6-9 as given: first dec 1/2 loop as foll: miss the first 5 dc of dc group with 5 sl-st, then 3 ch, 9 dc worked off tog, then cont as given and end with 4 ch and 1 sc into 5th dc of last dc group. Turn on 1 dc, then 9 dc into the dc worked off tog of previous row, end with 1 sc into the sl-st. Work rows 8-9 as given, then end work, work measures about 62 cm.

Finishing: block pieces to measurements, cover with a damp cloth and allow to dry. Join all seams, and sew sleeves in position. Crochet crab sts. (= sc from left to right) with the double yarn on 10 mm hook loosely along foundation edges of sleeve and entire jacket. Sew button to left front about 2 cm from upper neck edge. Sew snap in position at waist, about 3 cm from front edges.



Belt

Length: about 125 cm.

Materials: yarn **Gedifra Videra**, 50 g #03267 mottled green; **Gedifra Easy Wear**, 4 lengths in #07411 mottled green.

METHOD

Belt: bring 2 cords of Gedifra Easy Wear tog and knot tog, then knot the long cord several times unevenly across. Fold about 50 cm of one end under and knot both halves tog loosely twice. Bring the loose end through the resulting loop. Make two flowers about 10 cm across with the loom as given in the instructions using Gedifra Videra and fasten to the belt (see photo).